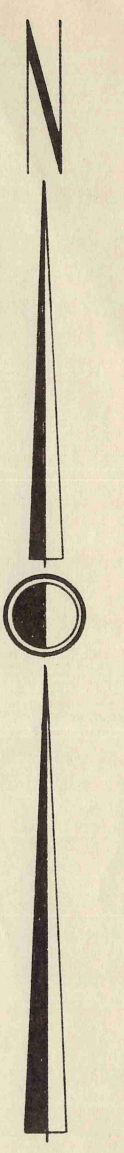
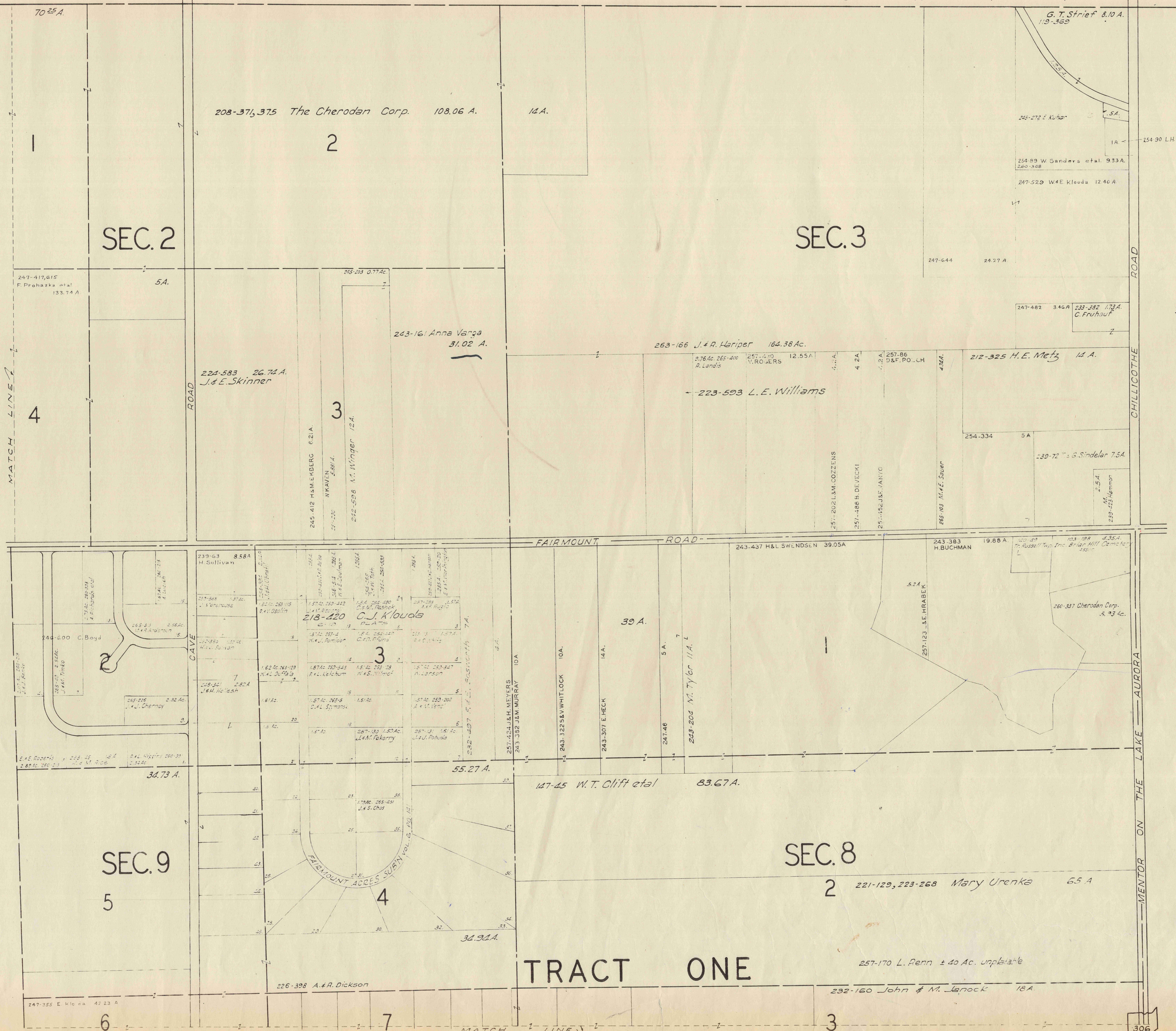


C H E S T E R T O W N S H I P



SCALE 1" = 300'
JAN. 1, 1955

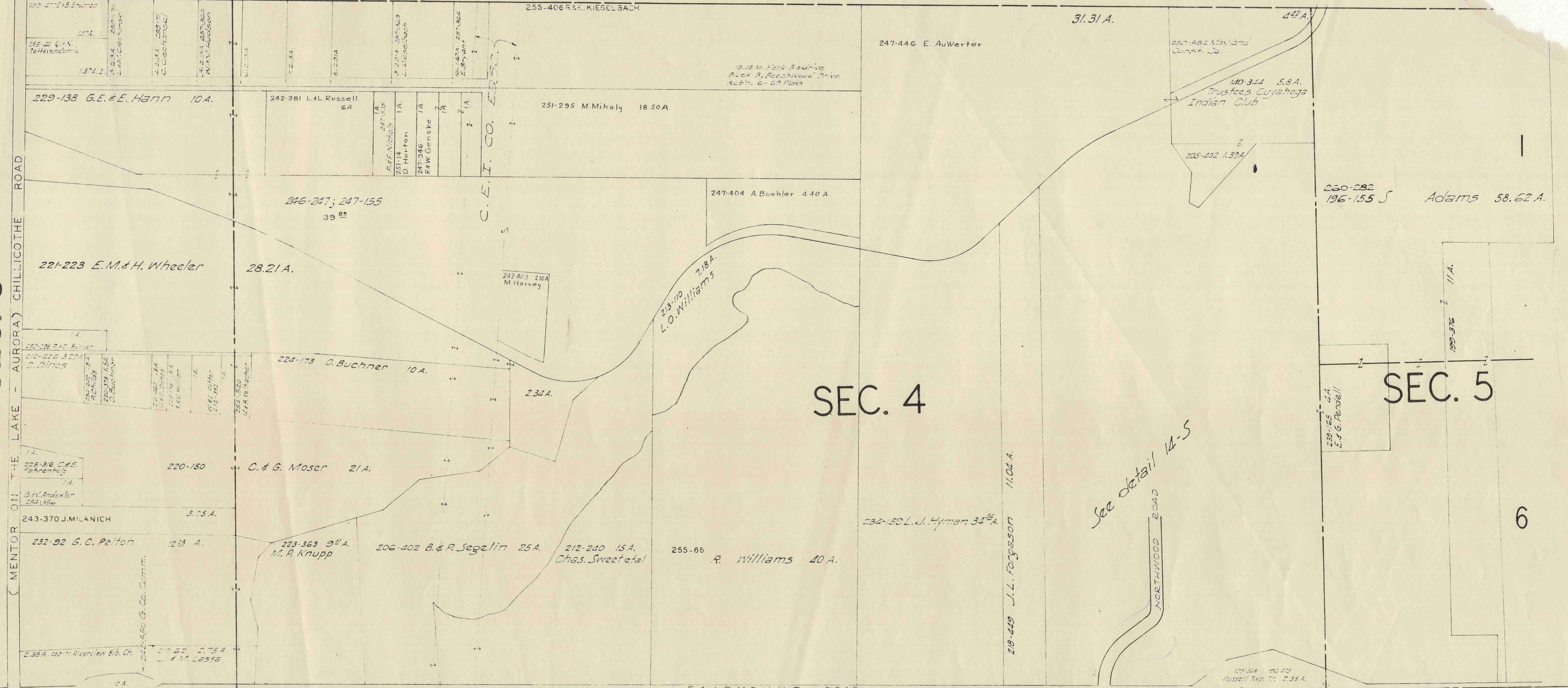


A	B	C	D
E	F	G	H
I	J	K	L
M	N	O	P

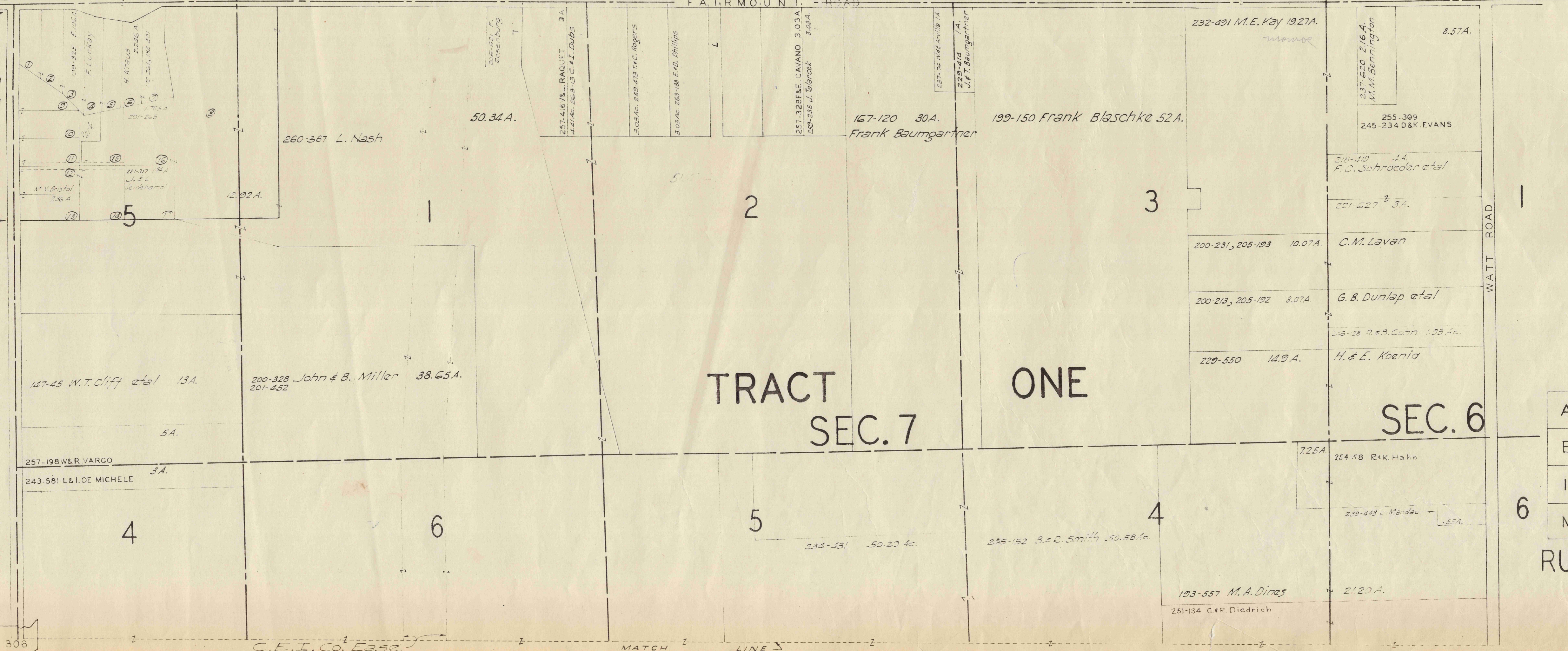
RUSSELL - B

C H E S T E R T O W N S H I P

SEC. 3



SEC. 8



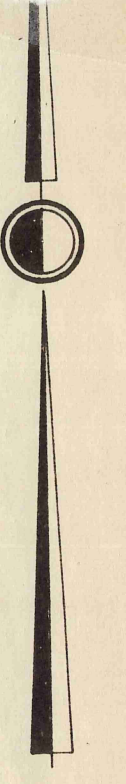
TRACT ONE SEC. 7

SEC. 6

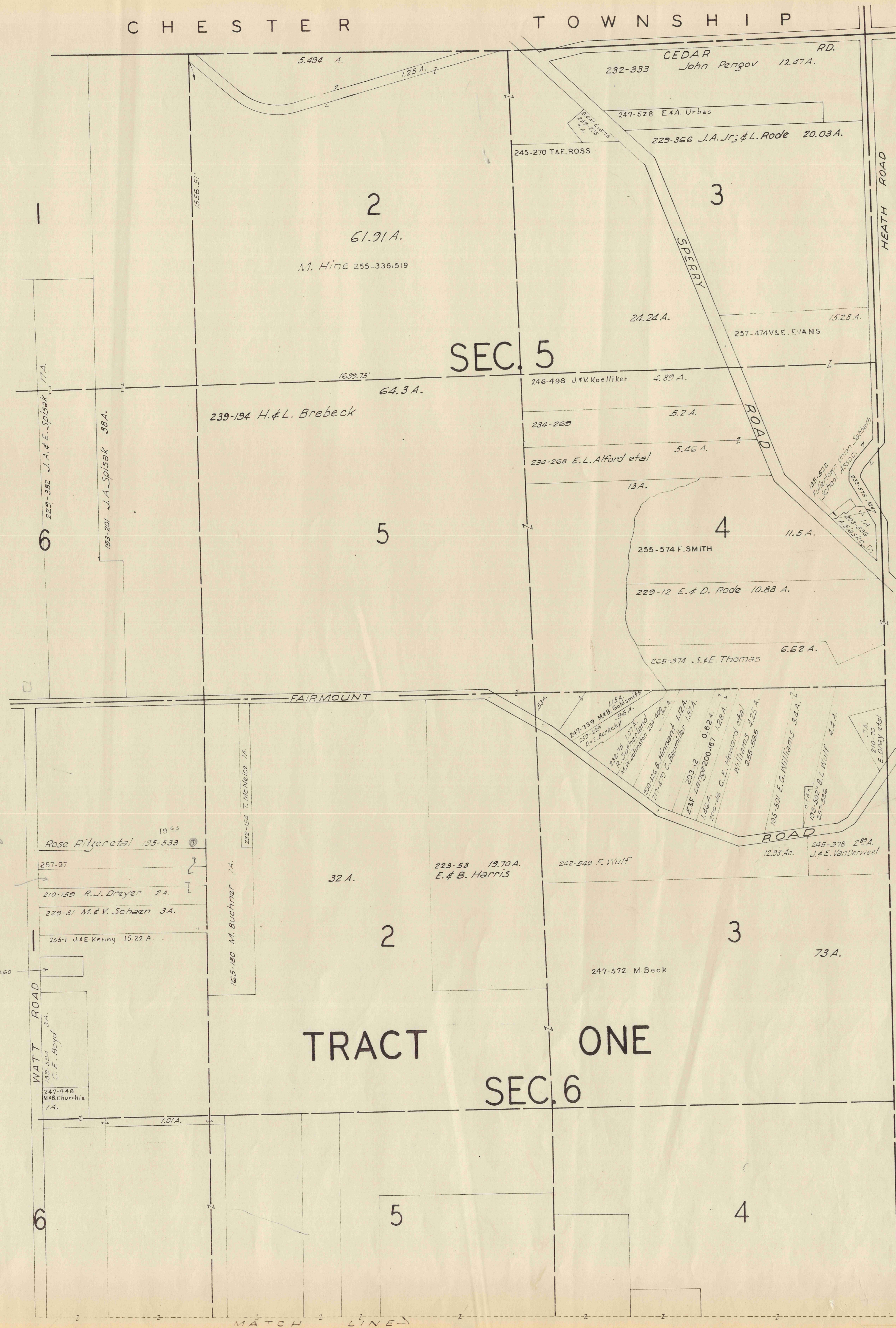
A	B	C	D
E	F	G	H
I	J	K	L
M	N	O	P

RUSSELL - C

SCALE 1" = 300'
JAN. 1, 1955



C H E S T E R T O W N S H I P



SCALE 1" = 300'
JAN. 1, 1955



P
I
S
H
I
S
T
O
W
N
S
H
I
P

TRACT ONE
SEC. 5
SEC. 6

A	B	C	D
E	F	G	H
I	J	K	L
M	N	O	P

RUSSELL - D

Handwritten: R. J. Dreyer
22-48

MATCH LINES

C O U N T Y
C O U N T Y
A H O G A
Y A
C U Y

VILLAGE OF HUNTING VALLEY

SEC. 10

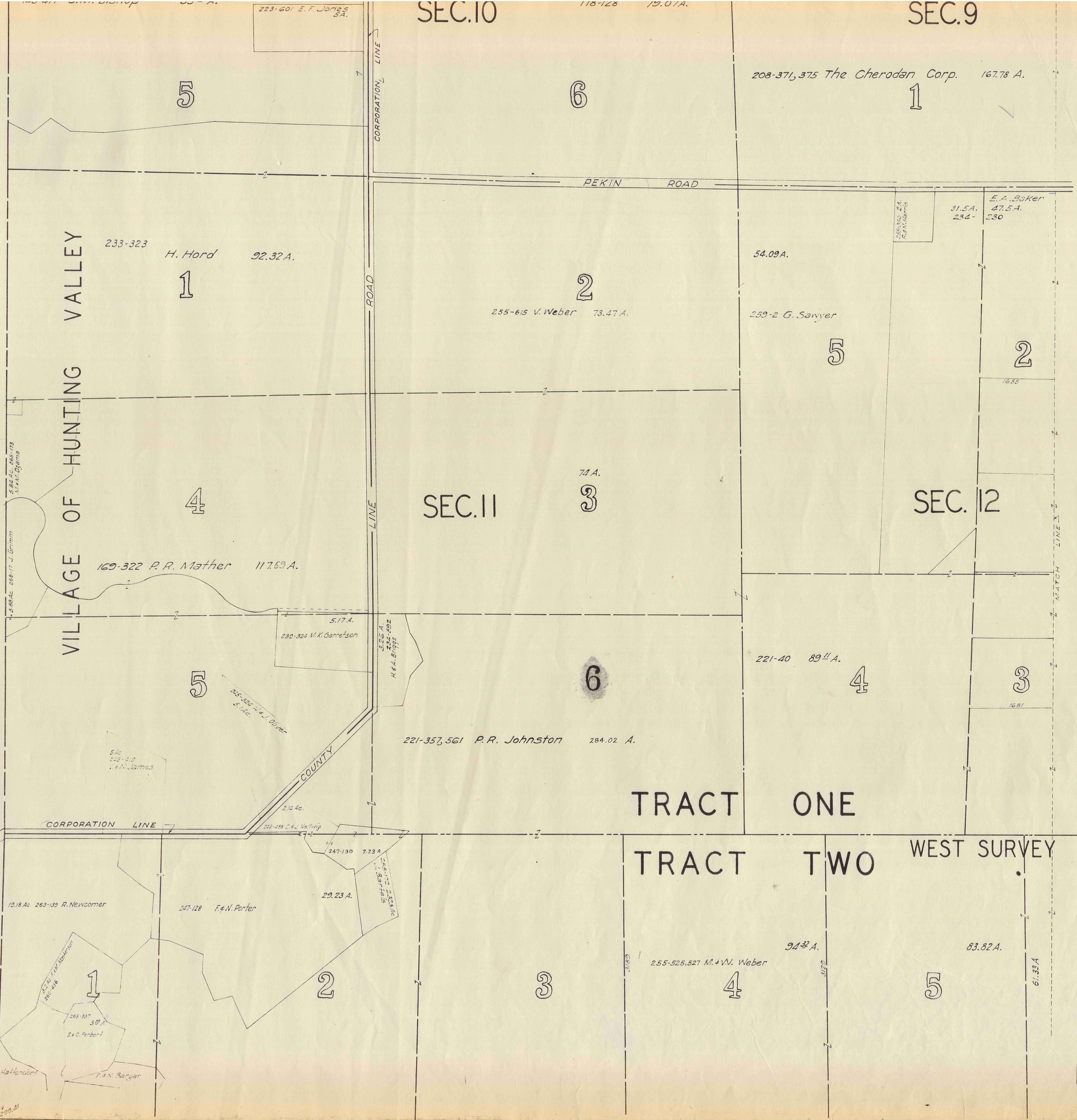
SEC. 9

SEC. 11

SEC. 12

TRACT ONE

TRACT TWO WEST SURVEY



208-371, 375 The Cherodan Corp. 167.78 A.

233-323 H. Hord 92.32 A.

169-322 P. R. Mather 117.69 A.

221-357, 561 P. R. Johnston 284.02 A.

54.09 A.

255-615 V. Weber 73.47 A.

259-2 G. Sawyer

221-40 89 1/2 A.

19.18 Ac. 263-139 R. Newcomer

247-128 F. & N. Porter

229.23 A.

255-525, 527 M. & V. Weber

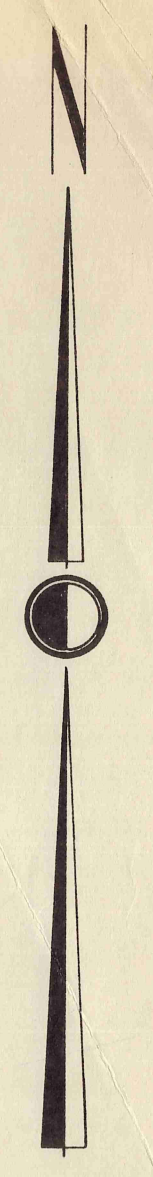
94 1/2 A.

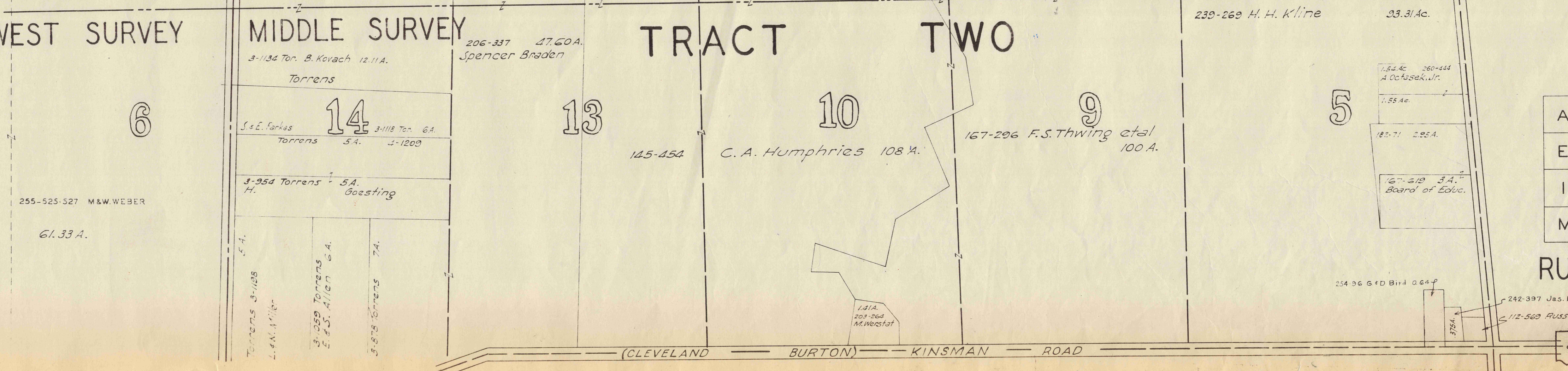
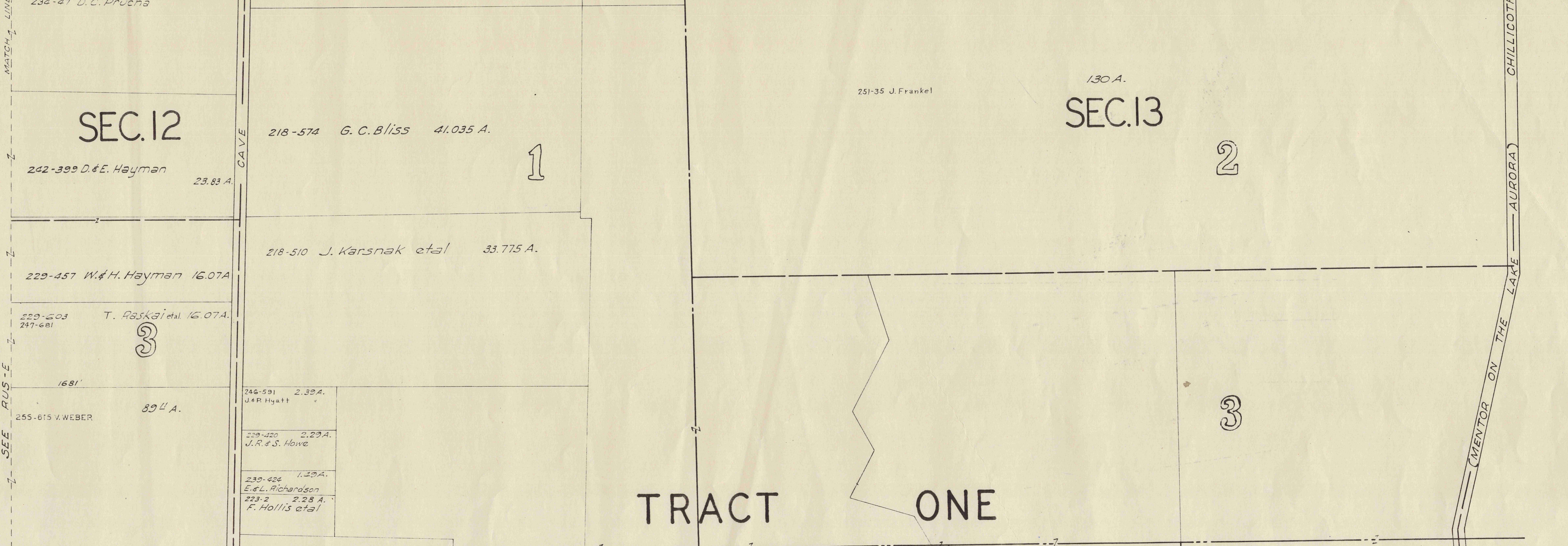
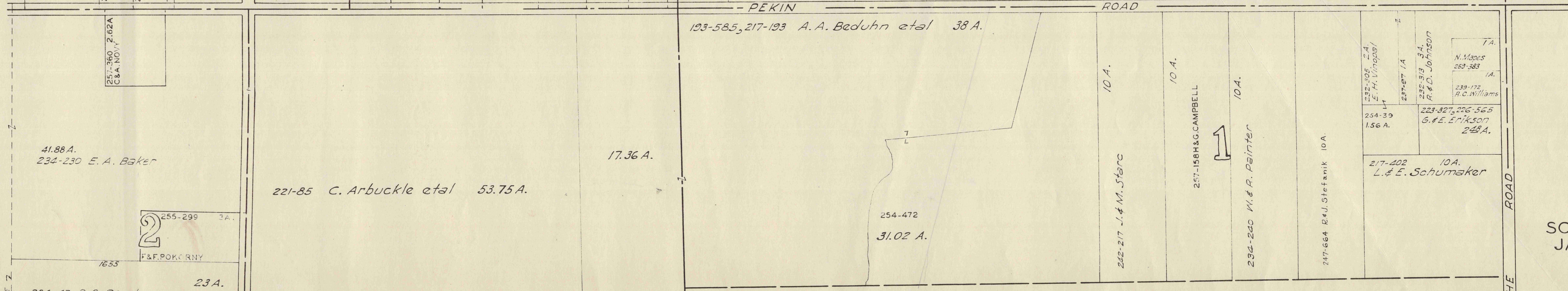
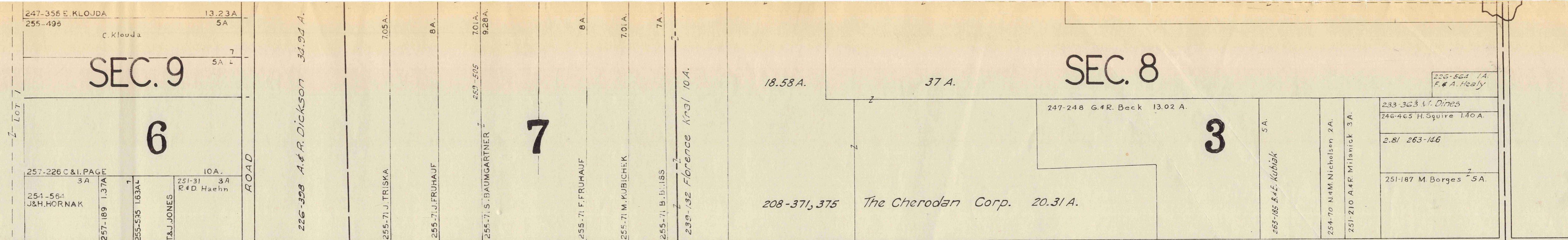
83.82 A.

A	B	C	D
E	F	G	H
I	J	K	L
M	N	O	P

RUSSELL - E

SCALE 1" = 300'
JAN. 1, 1955

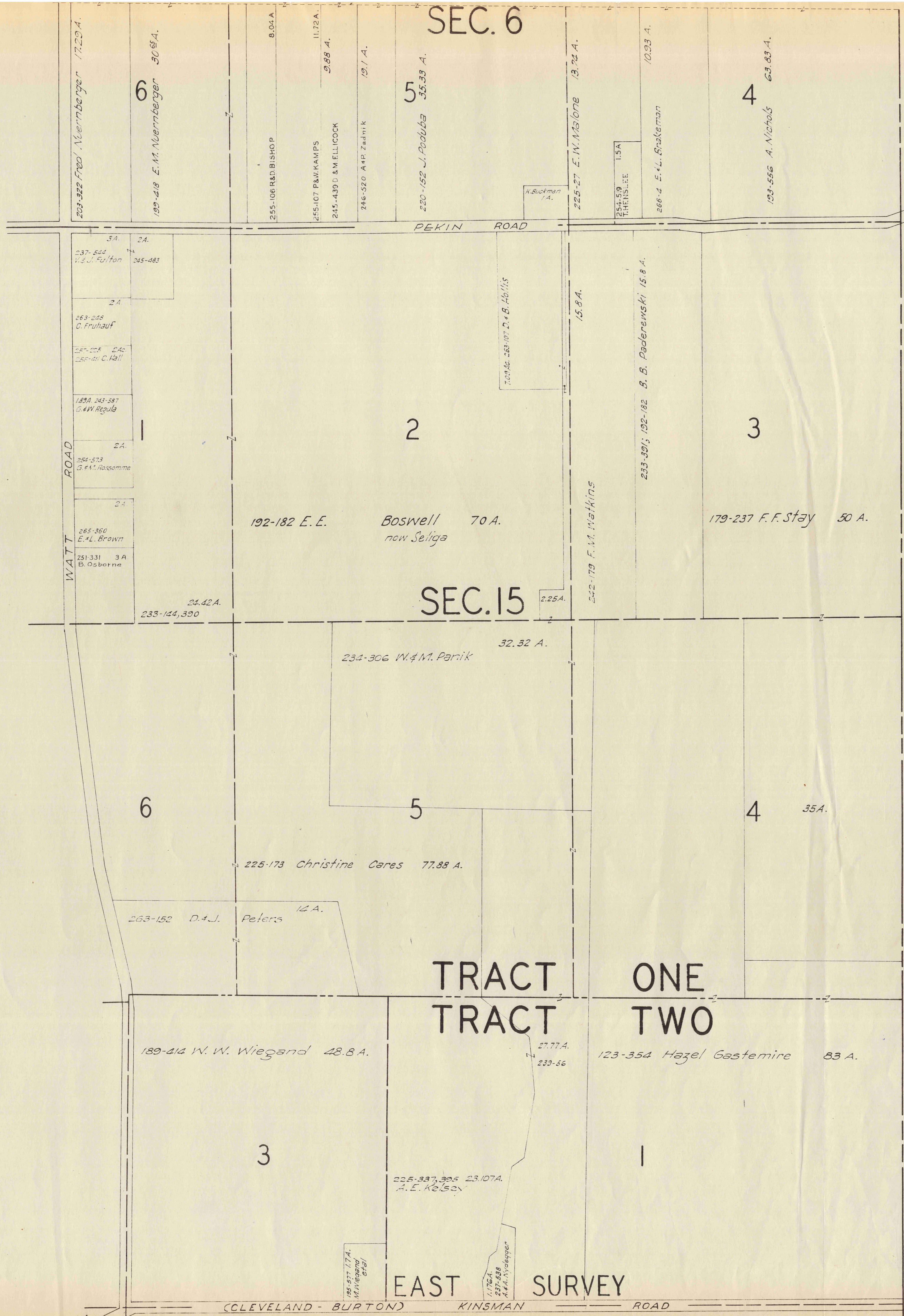




SCALE 1"=300'
JAN. 1, 1955

A	B	C	D
E	F	G	H
I	J	K	L
M	N	O	P

RUSSELL - F



P
I
H
S
N
W
O
T
Y
R
U
B
W
E
N



SCALE 1"=300'
JAN. 1, 1955

18
9
27,000

87

87

A	B	C	D
E	F	G	H
I	J	K	L
M	N	O	P

RUSSELL-H

EAST SURVEY

CLEVELAND - BURTON KINSMAN ROAD

SEC. 15

SEC. 6

TRACT ONE
TRACT TWO

255-525-527
M.S.W. WEBER

KINSMAN (CLEVELAND - BURTON) ROAD

87

6 1/2³ Ac.

CAVE RD
278-363
3-977 Bortens 4.5 A.
M & A Clifford
D.5 A.

14.02 A.
R Singer
281-234
295-397
6.04 A.

254-171 HIA Perry 3.31 A.
14.02 A.
263-101 R. James

10.04 A. 255-226 C. METZ
213-224 C. J. Janda et al 13.68 A.

10.5-116 A. H. Meyer et al 10.03 A.
10.04 A. 255-226 C. METZ

254-171 HIA Perry 3.31 A.
14.02 A.
263-101 R. James

281-234
295-397
6.04 A.

5 A. 202 L. E. Adam
277-159
235-9
E. Vohman 11 A.

220-173
12.62 A.

254-171 HIA Perry 3.31 A.
14.02 A.
263-101 R. James

HEMLOCK RD

218-335 1.35 A.
J & M Pilloun
A. Cerney 2 A.
234-120 R. E. Larsen 2.2 A.
221-22 3 A.
H. Mathews
255-50

HEMLOCK HILL DEVELOPMENT
VOL. 6 PGS. 5-6-7-8-9-10 PLATS
SEE SHEET 14-Q EAST

6

SUBDIVISION
14 Q & R

7

15

12

11

8

247-604
H. D. Bullock
2.10 A.

237-551 C. & K. Evans 6 A.
232-226 S. L. Channon 6 A.
243-143 et al
234-45 E. H. Wisner 8 A.
217-212 J. & L. Beniger 10 A.
S. A. 257-95

ESTATES
SHEETS

TRACT
TRACT

TWO
THREE

95.59 A.
255-460 Resort & Realty Co.

WEST SURVEY
MIDDLE SURVEY

CHAGRIN MILLS ROAD

ROAD

RIVERDALE
SEE

13

MATCH LINE

265-284, 287
H. R. Modroo
95.76 A.

65.18 A

12

234-496 C. G. Mathews et al 61 A.

220-305 G. & E. Motko 5 A.
220-412 C. & M. White 5 A.
251-321, 425 J. Studnicka 2.5 A.
254-264 L. S. H. JANKOWSKI 2.6 A.
217-54 T. H. Fonda et al 12.14 A.

213-219 4.88 A.
L. R. Buchner et al

217-523 2 A.
1 A.
1 A.
1 A.

234-497 38.24 A.

212-209
L. V. Mathews 14 3/4 A.

225-402
E. J. Genske
1 A.

247-329
C. Pringle
0.5 A.

14

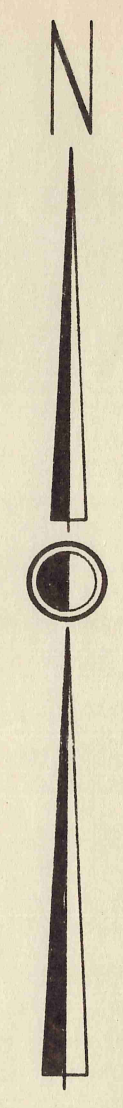
MUSIC STREET

CHILLICOTHE ROAD
AURORA
(MONTOR ON THE LAKE)
C. E. I. Co. (lease)

A	B	C	D
E	F	G	H
I	J	K	L
M	N	O	P

RUSSELL-

306



SCALE 1" = 300'
JAN. 1, 1955

87

87

KINSMAN

(CLEVELAND BURTON)

ROAD

224-471 220-239 C.S. Langer

CHILLICOTHE ROAD

AUORA MENTOR ON THE LAKE

C.E.I. Co. (Easement)

143-44 E. Duffee 1.438 A.
257-66 Russell Pipe Dept. 1.623 A.
255-329 W.R. Tel. Co.

178-306 Fabian Socola et al 50.84 A.

200-438 R.C. Hollis 12.74 A.

206-360 J.A. S.E. Burris et al

213-126 3.02 A. A.K. Hoare 247-551

234-82 M.&V. McMillen 3 A.

225-403 M.L. Mawer 18 A.

203-509, 223-225 R.H. Dumont 3 A.

L. Boehnlein et al 11.495 A. 243-183,190

251-145 5.4R. Fekete 10 A.

217-86 A. Herriott 3186 A.

246-93 A.&M. Gesner 6 A.

246-116 A.&L. Ferris 6 A.

243-691 A.&E. Aplin 5 A.

242-138 D.&A. Wenhnyak 5 A.

243-201 T.&J. Neves 25 A.

234-165 7 A. R.&M. Risany

242-336 E. Boros 255-280 7 A.

217-531 2.32 A. G.B. White

265-277 1.77 A. J. Lagwanis

230-236 1.21 A. G. Sabo

245-13 L.&M. Cain

247-534 W. Stack

247-535 J. F. F. F.

247-536 W. Stack

247-537 W. Stack

247-538 W. Stack

247-539 W. Stack

247-540 W. Stack

247-541 W. Stack

247-542 W. Stack

247-543 W. Stack

247-544 W. Stack

247-545 W. Stack

247-546 W. Stack

247-547 W. Stack

247-548 W. Stack

247-549 W. Stack

247-550 W. Stack

247-551 W. Stack

247-552 W. Stack

247-553 W. Stack

247-554 W. Stack

247-555 W. Stack

247-556 W. Stack

247-557 W. Stack

247-558 W. Stack

247-559 W. Stack

247-560 W. Stack

247-561 W. Stack

247-562 W. Stack

247-563 W. Stack

247-564 W. Stack

247-565 W. Stack

247-566 W. Stack

247-567 W. Stack

247-568 W. Stack

247-569 W. Stack

247-570 W. Stack

247-571 W. Stack

247-572 W. Stack

247-573 W. Stack

247-574 W. Stack

247-575 W. Stack

247-576 W. Stack

247-577 W. Stack

247-578 W. Stack

247-579 W. Stack

247-580 W. Stack

247-581 W. Stack

247-582 W. Stack

247-583 W. Stack

247-584 W. Stack

247-585 W. Stack

247-586 W. Stack

247-587 W. Stack

247-588 W. Stack

247-589 W. Stack

247-590 W. Stack

247-591 W. Stack

247-592 W. Stack

247-593 W. Stack

247-594 W. Stack

247-595 W. Stack

247-596 W. Stack

247-597 W. Stack

247-598 W. Stack

247-599 W. Stack

247-600 W. Stack

247-601 W. Stack

247-602 W. Stack

247-603 W. Stack

247-604 W. Stack

247-605 W. Stack

247-606 W. Stack

247-607 W. Stack

247-608 W. Stack

247-609 W. Stack

247-610 W. Stack

247-611 W. Stack

247-612 W. Stack

247-613 W. Stack

247-614 W. Stack

247-615 W. Stack

247-616 W. Stack

247-617 W. Stack

247-618 W. Stack

247-619 W. Stack

247-620 W. Stack

247-621 W. Stack

247-622 W. Stack

247-623 W. Stack

247-624 W. Stack

247-625 W. Stack

247-626 W. Stack

247-627 W. Stack

247-628 W. Stack

247-629 W. Stack

247-630 W. Stack

247-631 W. Stack

247-632 W. Stack

247-633 W. Stack

247-634 W. Stack

247-635 W. Stack

247-636 W. Stack

247-637 W. Stack

247-638 W. Stack

247-639 W. Stack

247-640 W. Stack

247-641 W. Stack

247-642 W. Stack

247-643 W. Stack

247-644 W. Stack

247-645 W. Stack

247-646 W. Stack

247-647 W. Stack

247-648 W. Stack

247-649 W. Stack

247-650 W. Stack

247-651 W. Stack

247-652 W. Stack

247-653 W. Stack

247-654 W. Stack

247-655 W. Stack

247-656 W. Stack

A	B	C	D
E	F	G	H
I	J	K	L
M	N	O	P

RUSSELL-K

SCALE 1"=300'
JAN. 1, 1955

MATCH LINE

4

3

306

TRACT TWO TRACT THREE

MIDDLE SURVEY EAST SURVEY

5

6

10

12

9

8

2

3

12

306

143-44

257-66

255-329

178-306

200-438

206-360

213-126

234-82

225-403

203-509, 223-225

243-183, 190

251-145

217-86

246-93

246-116

243-691

242-138

243-201

234-165

242-336

217-531

265-277

230-236

245-13

247-534

247-535

247-536

247-537

247-538

247-539

247-540

247-541

247-542

247-543

247-544

247-545

247-546

247-547

247-548

247-549

247-550

247-551

247-552

247-553

247-554

247-555

1946 A

254-105

218-469

221-577

260-3

218-469

221-577

260-3

218-469

221-577

260-3

218-469

221-577

260-3

218-469

221-577

260-3

218-469

221-577

260-3

218-469

221-577

260-3

218-469

221-577

260-3

218-469

221-577

260-3

218-469

221-577

260-3

218-469

221-577

260-3

218-469

221-577

260-3

218-469

221-577

260-3

218-469

221-577

260-3

218-469

221-577

260-3

218-469

221-577

260-3

218-469

221-577

260-3

218-469

221-577

260-3

218-469

221-577

260-3

218-469

221-577

260-3

218-469

221-577

260-3

218-469

221-577

87

87

7
255-428 CLEVELAND TRUST CO.
100.16 A.

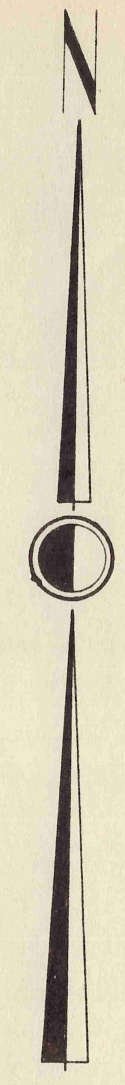
4

2
175 A.

11 A.

32.5 A.

N
E
W
B
U
R
N
E
S
T
O
W
N
S
H
I
P



SCALE 1"=300'
JAN. 1, 1955

TRACT EAST SURVEY TWO TRACT THREE

172 A.

233-451
210-198 E. G. Schurger

103.33 A.

MATCH LINE ↗

203-458 O. Jones

4

213-204 23.44 A.
L. W. Hiseq

210-476 32.3 A.
G. & H. Baumgartner

6.02 A.
246-304 J. V. & M. Genesee

MUSIC STREET

247-314 25 A.
B. Manak

0.75 A.

MATCH LINE ↘ 3

A	B	C	D
E	F	G	H
I	J	K	L
M	N	O	P

RUSSELL-L

TRACT THREE

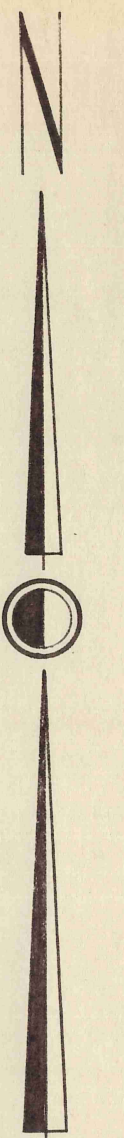
VILLAGE OF CHAGRIN FALLS

143-323, 196-161 F. J. Jaros 78.59 A.

189-565 E. & N. Gest 83.75 A.

14

SCALE 1"=300'
JAN. 1, 1955



SUBDIVISIONS NOS. 1-2-3
SHEETS 14-T

CHAGRIN HEIGHTS SEC 15

SO. RUSSELL

221-279 J. Kofsky et al

222-102 F. Akers

224-85 V. J. Miller

259-437 B. N. Hudson

226-191 L. Barr

BELL STREET

233-302, 303 E. A. Thayer 16.60 A.

VILL.



247-429 J. M. Bagley

232-316 J. R. Flock 6.7 A.

232-383 E. L. Schmeid 5.4 A.

233-551 N. R. Lock

239-472 T. A.

245-281 Z. A. G. B. Thayer

235-202 G. B. Thayer

235-203 G. B. Thayer

235-204 G. B. Thayer

235-205 G. B. Thayer

235-206 G. B. Thayer

235-207 G. B. Thayer

235-208 G. B. Thayer

235-209 G. B. Thayer

235-210 G. B. Thayer

235-211 G. B. Thayer

235-212 G. B. Thayer

235-213 G. B. Thayer

235-214 G. B. Thayer

235-215 G. B. Thayer

235-216 G. B. Thayer

235-217 G. B. Thayer

235-218 G. B. Thayer

235-219 G. B. Thayer

235-220 G. B. Thayer

235-221 G. B. Thayer

235-222 G. B. Thayer

235-223 G. B. Thayer

235-224 G. B. Thayer

235-225 G. B. Thayer

235-226 G. B. Thayer

235-227 G. B. Thayer

235-228 G. B. Thayer

235-229 G. B. Thayer

235-230 G. B. Thayer

235-231 G. B. Thayer

235-232 G. B. Thayer

235-233 G. B. Thayer

235-234 G. B. Thayer

235-235 G. B. Thayer

235-236 G. B. Thayer

235-237 G. B. Thayer

235-238 G. B. Thayer

235-239 G. B. Thayer

235-240 G. B. Thayer

235-241 G. B. Thayer

235-242 G. B. Thayer

235-243 G. B. Thayer

235-244 G. B. Thayer

235-245 G. B. Thayer

235-246 G. B. Thayer

235-247 G. B. Thayer

235-248 G. B. Thayer

235-249 G. B. Thayer

235-250 G. B. Thayer

235-251 G. B. Thayer

235-252 G. B. Thayer

235-253 G. B. Thayer

235-254 G. B. Thayer

235-255 G. B. Thayer

235-256 G. B. Thayer

235-257 G. B. Thayer

235-258 G. B. Thayer

235-259 G. B. Thayer

235-260 G. B. Thayer

235-261 G. B. Thayer

235-262 G. B. Thayer

235-263 G. B. Thayer

235-264 G. B. Thayer

235-265 G. B. Thayer

235-266 G. B. Thayer

235-267 G. B. Thayer

235-268 G. B. Thayer

235-269 G. B. Thayer

235-270 G. B. Thayer

235-271 G. B. Thayer

235-272 G. B. Thayer

235-273 G. B. Thayer

235-274 G. B. Thayer

235-275 G. B. Thayer

235-276 G. B. Thayer

235-277 G. B. Thayer

235-278 G. B. Thayer

235-279 G. B. Thayer

235-280 G. B. Thayer

235-281 G. B. Thayer

235-282 G. B. Thayer

235-283 G. B. Thayer

235-284 G. B. Thayer

235-285 G. B. Thayer

235-286 G. B. Thayer

235-287 G. B. Thayer

235-288 G. B. Thayer

235-289 G. B. Thayer

235-290 G. B. Thayer

235-291 G. B. Thayer

235-292 G. B. Thayer

235-293 G. B. Thayer

235-294 G. B. Thayer

235-295 G. B. Thayer

235-296 G. B. Thayer

235-297 G. B. Thayer

235-298 G. B. Thayer

235-299 G. B. Thayer

235-300 G. B. Thayer

235-301 G. B. Thayer

235-302 G. B. Thayer

235-303 G. B. Thayer

235-304 G. B. Thayer

235-305 G. B. Thayer

235-306 G. B. Thayer

235-307 G. B. Thayer

235-308 G. B. Thayer

235-309 G. B. Thayer

235-310 G. B. Thayer

235-311 G. B. Thayer

235-312 G. B. Thayer

235-313 G. B. Thayer

235-314 G. B. Thayer

235-315 G. B. Thayer

235-316 G. B. Thayer

235-317 G. B. Thayer

235-318 G. B. Thayer

235-319 G. B. Thayer

235-320 G. B. Thayer

235-321 G. B. Thayer

235-322 G. B. Thayer

235-323 G. B. Thayer

235-324 G. B. Thayer

16

255-325 C. Morrison

CHAGRIN FALLS GREENVILLE ROAD

235-280 C. A. G. 2.5 A.

235-281 C. A. G. 2.5 A.

235-282 C. A. G. 2.5 A.

235-283 C. A. G. 2.5 A.

235-284 C. A. G. 2.5 A.

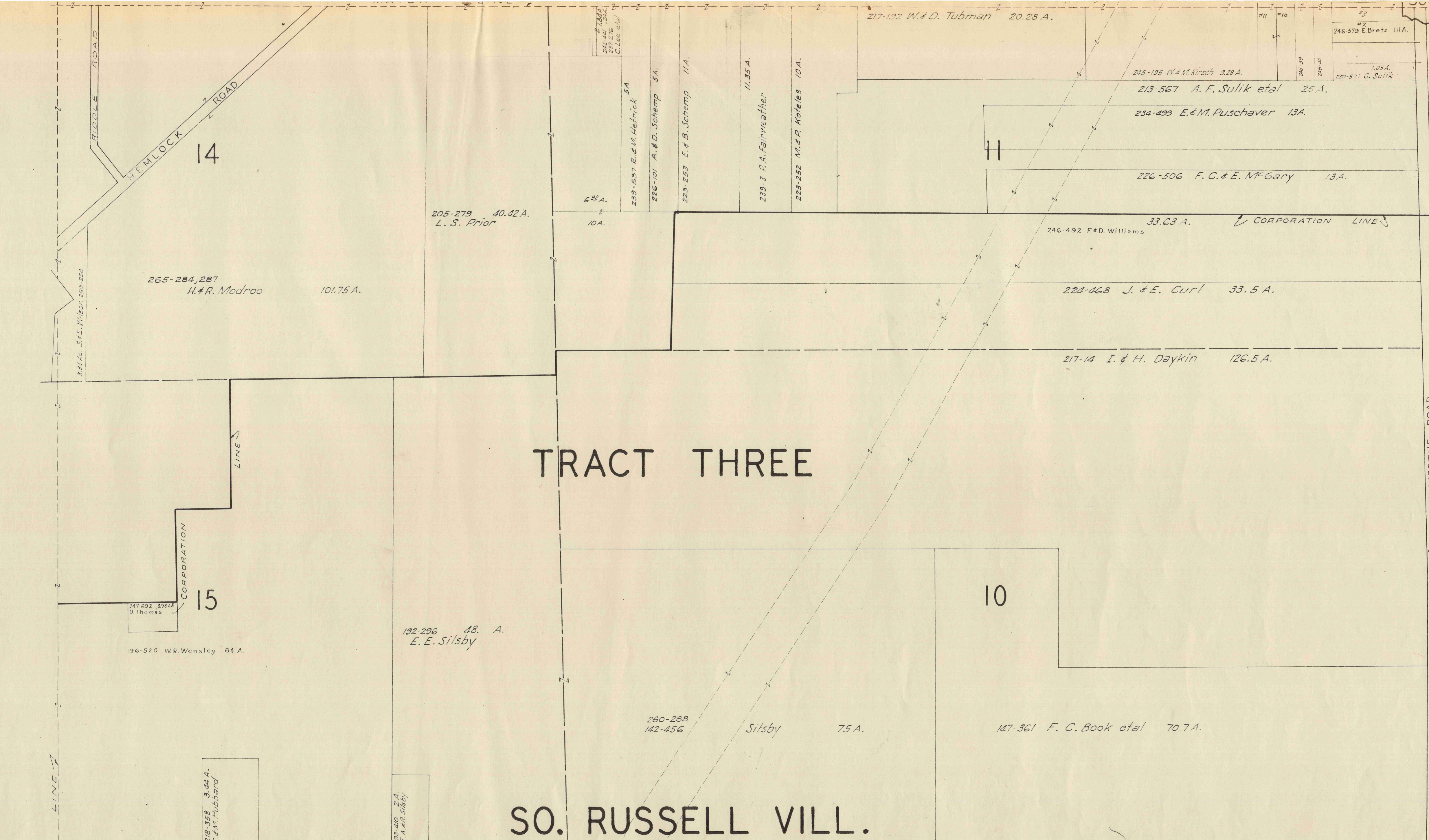
235-285 C. A. G. 2.5 A.

235-286 C. A. G. 2.5 A.

B A I N B R I D G E T O W N S H I P

A	B	C	D
E	F	G	H
I	J	K	L
M	N	O	P

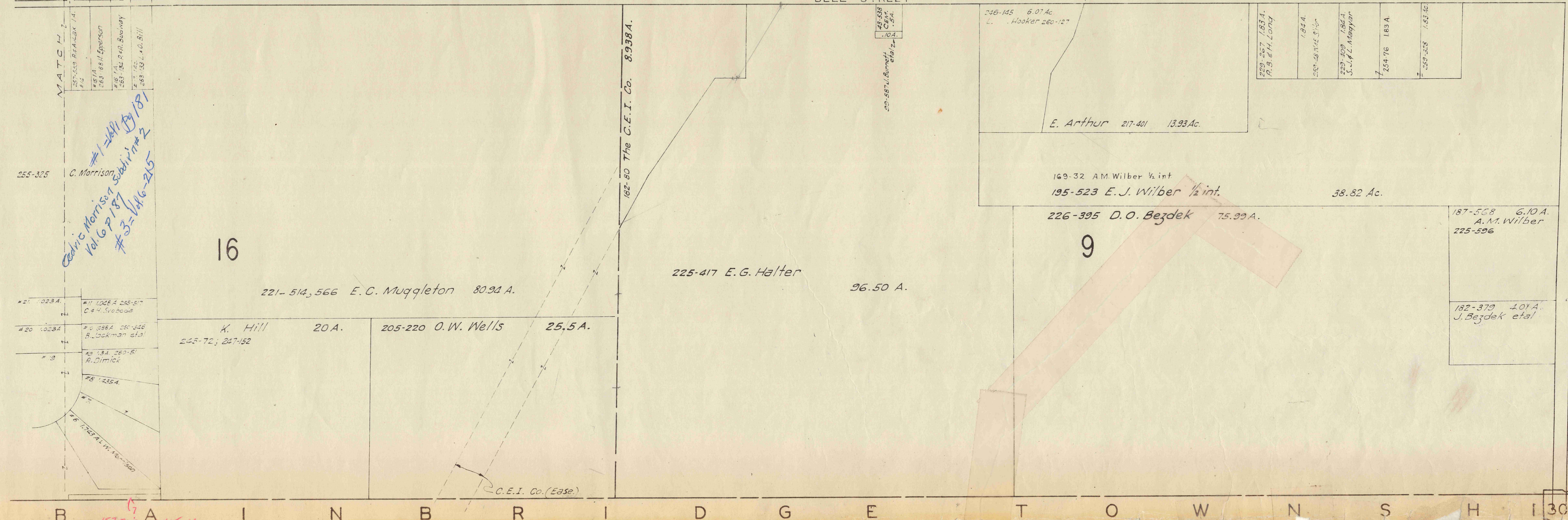
RUSSELL-M



SCALE 1"=300'
JAN. 1, 1955

A	B	C	D
E	F	G	H
I	J	K	L
M	N	O	P

RUSSELL - N



B I N B R I D G E T O W N S H I P



NOTE
THE AREAS SHOWN
HEREON ARE
APPROXIMATE, AND
ARE COMPUTED TO
THE CENTER LINES
OF THE STREETS.

SCALE 1"=25 CH=165

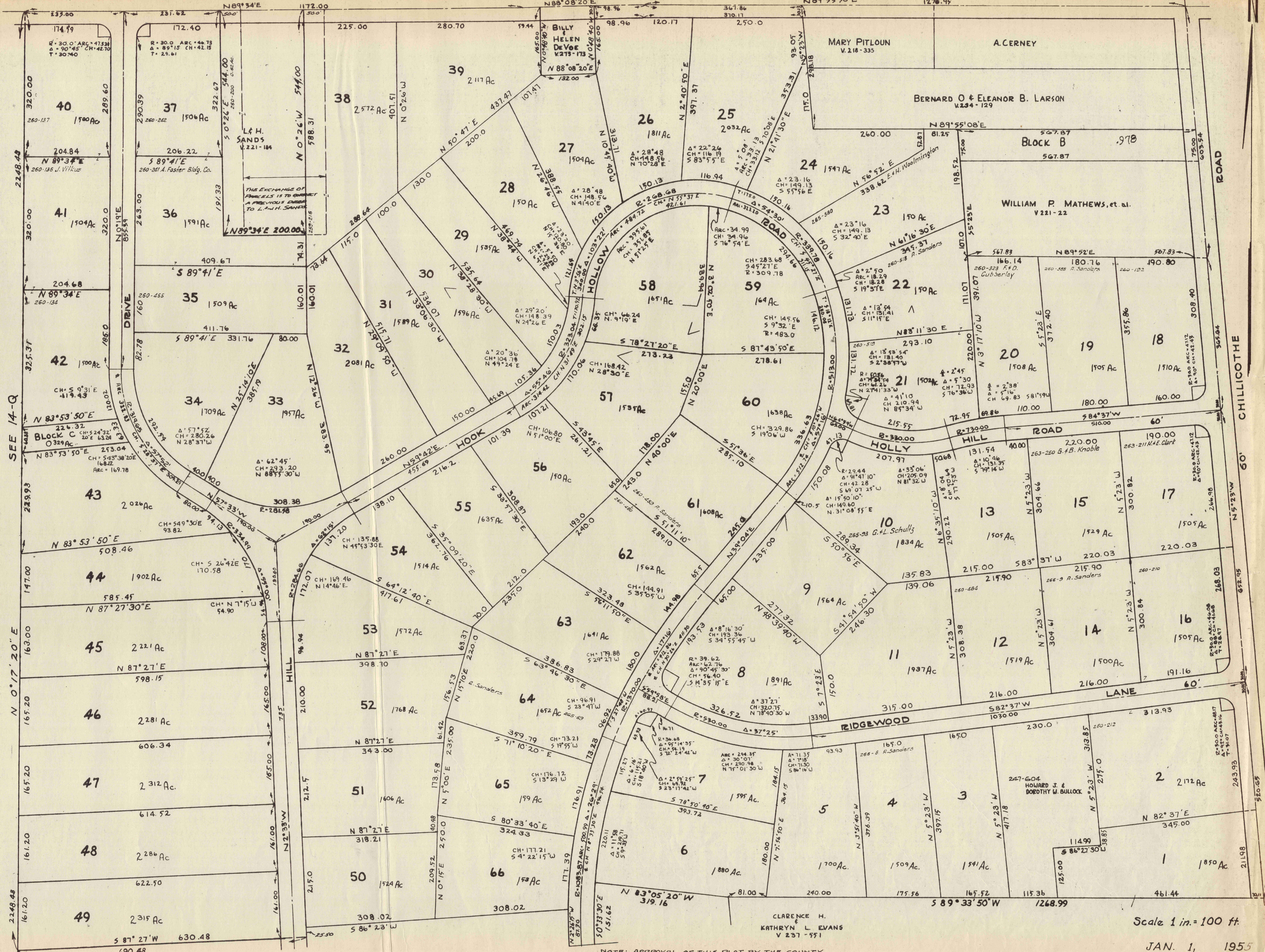
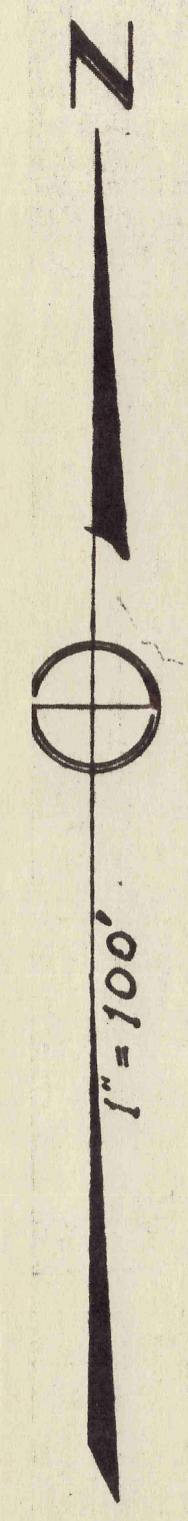
JAN 1, 1955

TRACT TWO
TRACT LINE 1

SEE PART TWO

TRACT TWO
TRACT LINE 1

14-C



HEMLOCK HILL DEVELOPMENT
Vol. 6 pgs. 5-6-7-8-9-10 Recorder's Platbook.

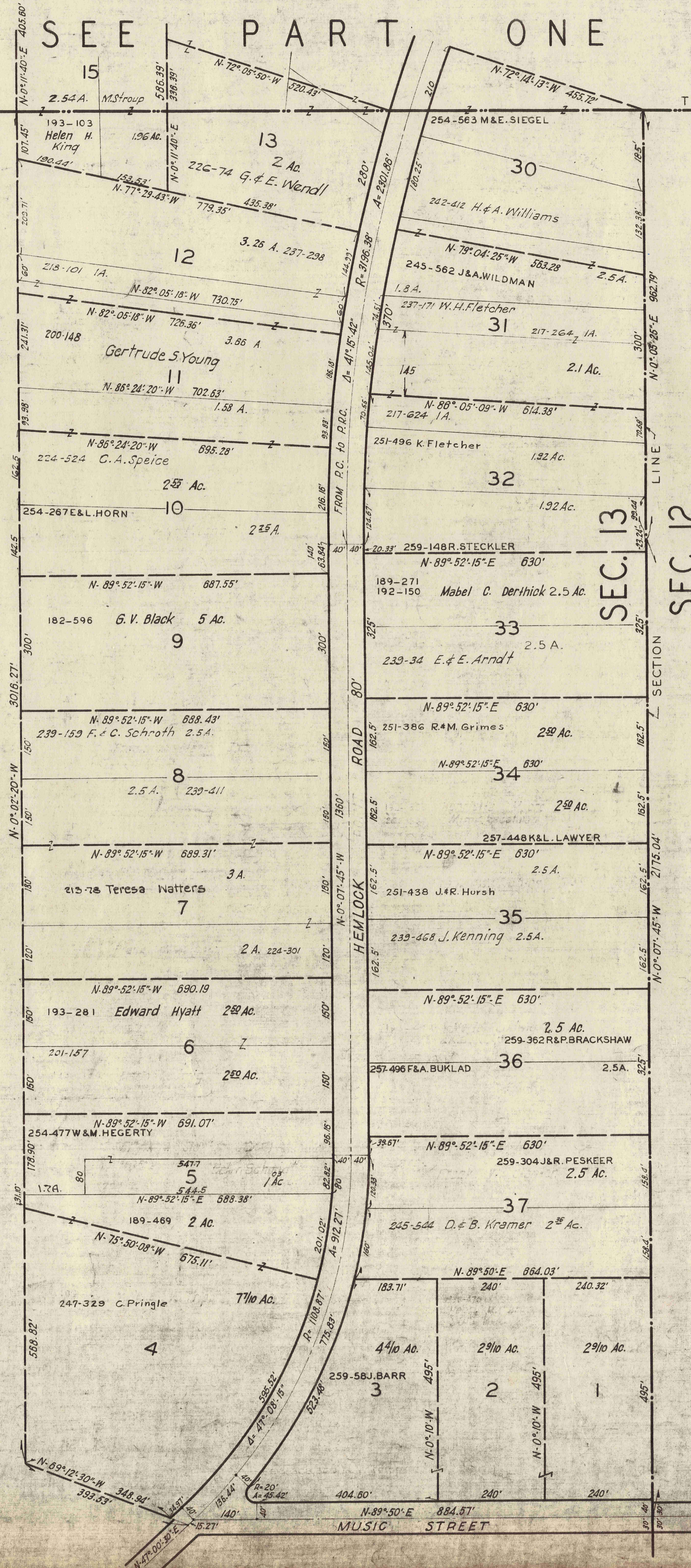
NOTE: APPROVAL OF THIS PLAT BY THE COUNTY COMMISSIONERS AND OTHER PUBLIC BODIES DOES NOT CONSTITUTE THE MAINTENANCE OF ROADS.

Scale 1 in. = 100 ft.
JAN. 1, 1955
RUSSELL 14-Q EAST

CLARENCE H. KATHRYN L. EVANS
V 231-551

TRACT TWO
TRACT LINE 7
TRACT THREE

TRACT TWO
TRACT LINE 7
TRACT THREE



—*NOTE*—
THE AREAS SHOWN HEREON ARE APPROXIMATE, AND ARE COMPUTED TO THE CENTER LINES OF THE STREETS.

SCALE 1"=2.5 CH.=165 FT.
JAN. 1, 1955

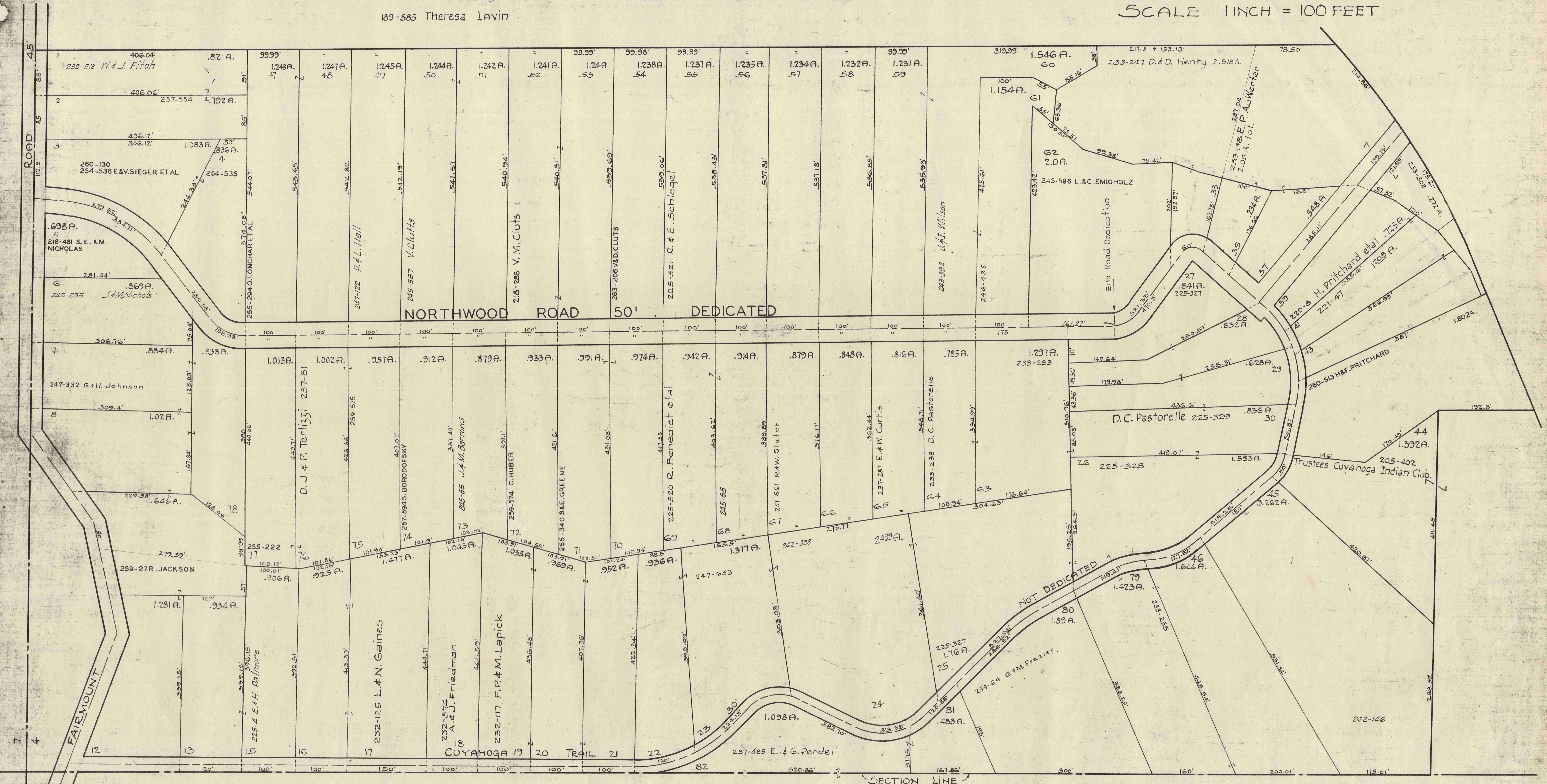
RUSSELL TP.

DETAIL PART SECTION 4, TRACT 1

NORTHWOOD HILLS SUBDIVISION - NOT RECORDED

183-585 Theresa Lavin

SCALE 1 INCH = 100 FEET



NOTE: Distances and areas shown hereon are copied from data supplied by THE NUTMEG Land Company

NOTE: All parcels on which ownership is not shown stand in the name of THE NUTMEG LAND COMPANY, VOL. 218 Pg. 182 Records of Deeds* and constitute _____ acres of land as of JAN. 1, 1955

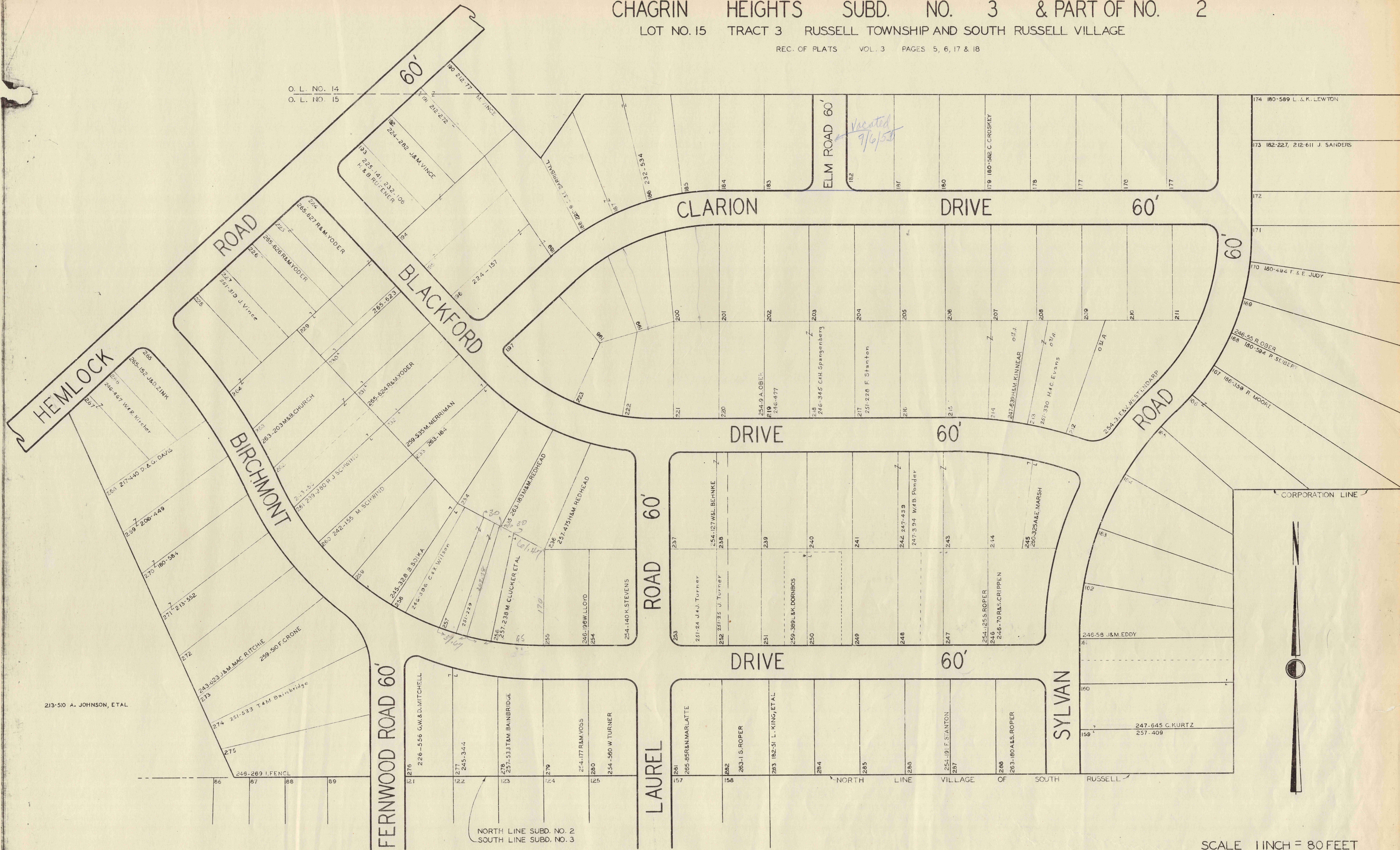
* Conveyed to J. Forrester & E. Elbrecht Trustees, vol. 243 pg. 45

CHAGRIN HEIGHTS SUBD. NO. 3 & PART OF NO. 2

LOT NO. 15 TRACT 3 RUSSELL TOWNSHIP AND SOUTH RUSSELL VILLAGE

REC. OF PLATS VOL. 3 PAGES 5, 6, 17 & 18

O. L. NO. 14
O. L. NO. 15



213-510 A. JOHNSON, ETAL

NORTH LINE SUBD. NO. 2
SOUTH LINE SUBD. NO. 3

SEE 14 - T - SOUTH

SCALE 1 INCH = 80 FEET

JAN 1, 1955

NOTE: ALL LOTS OF WHICH OWNERS ARE NOT DESIGNATED STAND IN THE NAME OF FRANK STANTON

Plan Showing Re-staking of
PAW PAW LAKE
 SUBDIVISION
 (Per plat recorded Jan. 19th 1921, of Vol. 19, p. 34)
 Formerly RUSSELL VILLAGE
 Formerly Russell Township
 Geauga County - Ohio

Scale 1 inch = 100 feet



MAR. 1, 1955

239-233 Paw Paw Lake Home Co.
 Not in orig. Survey 236A.